



*Integration that makes sense*

## **fileXhub™: Secure B2B Communications Server**

### **Business Integration Technology's Solution to Network Security and Complexity**

fileXhub™ is a lightweight replacement to standard protocol services (FTP, SFTP, HTTP, HTTPS) that is deployable in the DMZ.

This allows you to eliminate the need to open "holes" in the firewall of the secure internal network while still being able to service a wide variety of standard messaging protocols. **NO** connections are made from the DMZ to the secure internal network, thus keeping the internal network safe.



All messages stored in fileXhub™ are retrieved from the internal network via the REST Web Service interface, regardless of which incoming protocol was used to store the message. This allows your customers to use whichever protocol they prefer while you only use a single protocol, REST Web Service, to retrieve messages. REST Web Services require only standard HTTP, so they are accessible to any system or language capable of making HTTP requests.

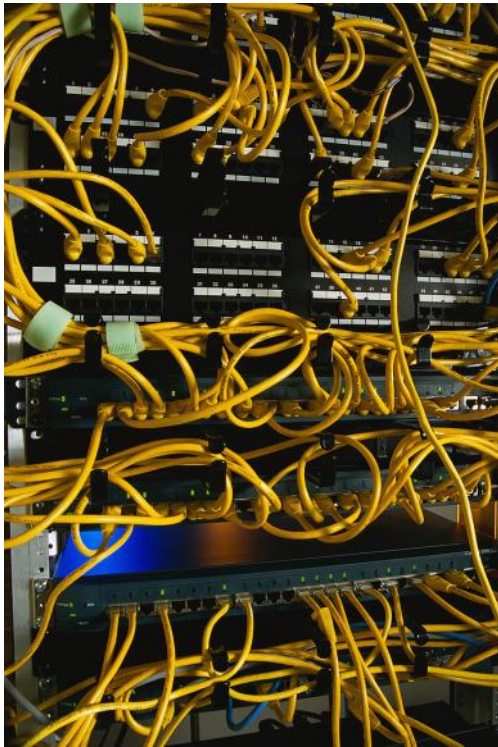
Not only does fileXhub™ help keep your internal network secure, it also secures your data as well by encrypting the data before storing it in an encrypted database. This means you no longer have to worry about plain text messages sitting on your FTP server in the insecure external network (DMZ). fileXhub™ accomplishes this by transparently using an encrypted database instead of accessing the file system. For example, when a user logs into proxy via FTP they can use the standard FTP commands to store and retrieve files; however they are not actually interacting with the file system.

fileXhub™ simplifies user account management as well by centralizing all protocol accounts. Since fileXhub™ users are non OS level accounts and fileXhub™ doesn't actually access the file system, you can run the fileXhub™ process as a non privileged user on non privileged ports for even more security.

#### **Business Integration Technology, Inc.**

1310 Papin Street  
First Floor Center  
St. Louis, MO 63103

Phone: 314-635-6351  
Fax: 314-601-3092  
<http://BusinessIntegrationTechnology.com/>  
Email: [info@BusinessIntegrationTechnology.com](mailto:info@BusinessIntegrationTechnology.com)



## Features

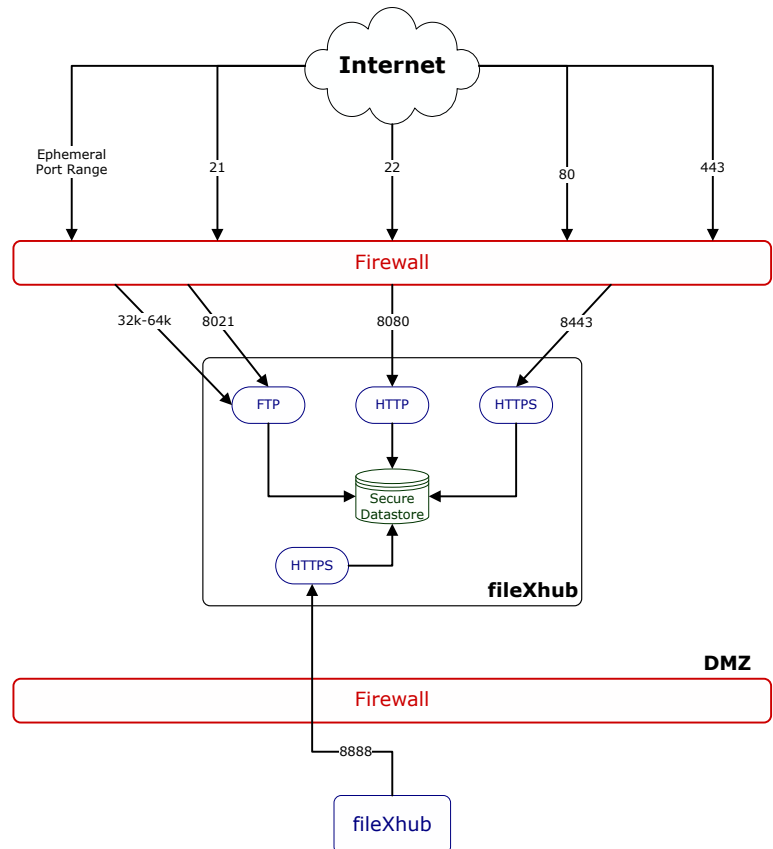
- fileXhub™ message store access via a simple REST Web Service interface
- REST Web Services are accessible to any system or language capable of making HTTP requests
- Switch external customers' protocols without internal coding changes
- Extensible, Spring-enabled for easy customization
- Highly secure - encrypts each message before storing it in an encrypted database
- Easy, centralized account management for all supported protocols
- fileXhub™ users are **NOT** operating system level accounts
- fileXhub™ can be run as non-privileged user on non-privileged ports

## Requirements

- Java JRE 6+
- 2.4 compatible servlet container (Tomcat 5.1.25+ recommended)
- Linux or other suitable server OS recommended

## Simple Use Case

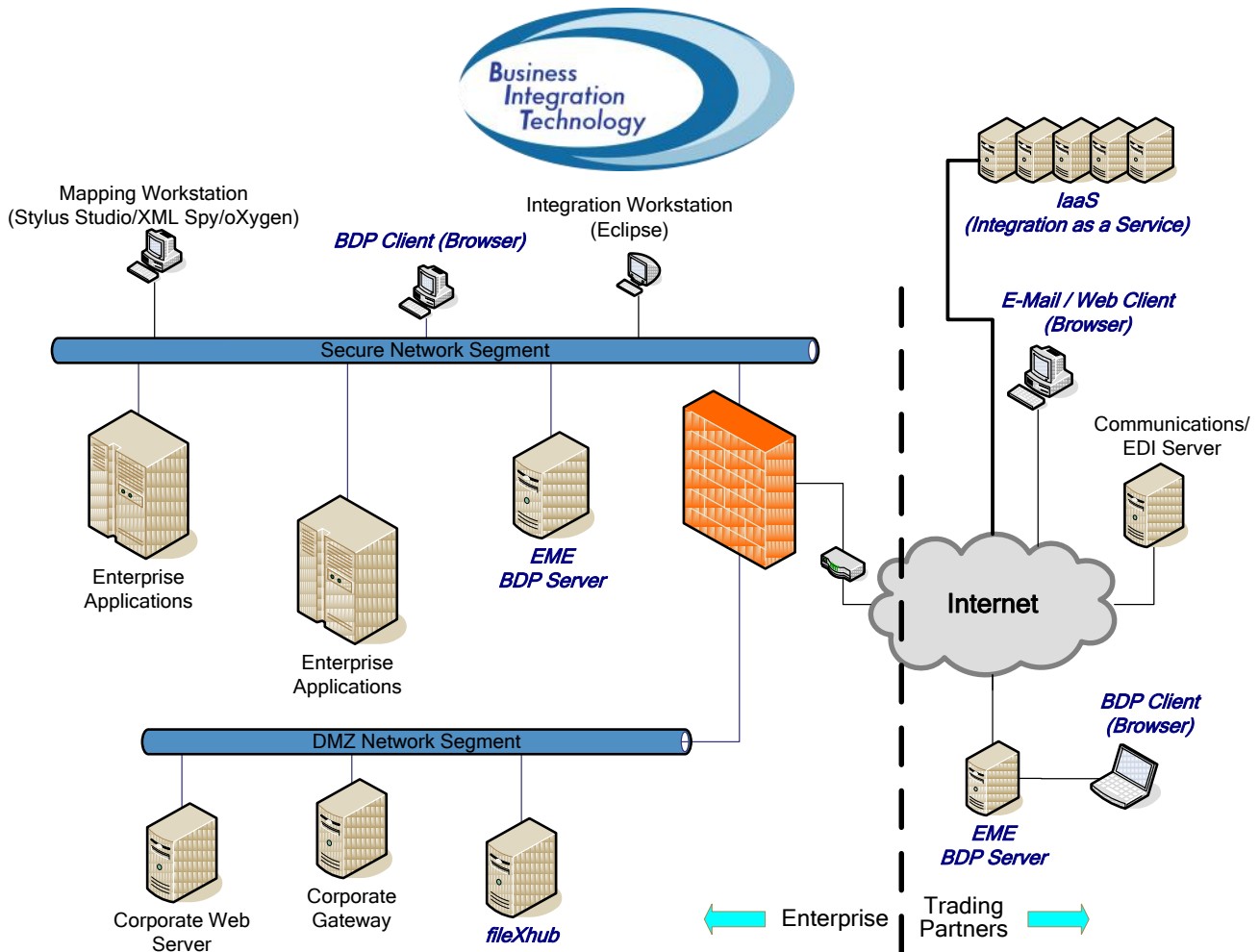
- User logs in via FTP
- User uploads file to fileXhub™
- fileXhub™ encrypts message before storing in encrypted database
- Client inside firewall queries fileXhub™ via REST Web service for message
- Client inside firewall processes message
- Client inside firewall calls REST Web service when done processing message
- fileXhub™ removes message from secure database



1310 Papin Street  
First Floor Center  
St. Louis, MO 63103

Phone: 314-635-6351  
Fax: 314-601-3092  
<http://BusinessIntegrationTechnology.com/>  
Email: [info@BusinessIntegrationTechnology.com](mailto:info@BusinessIntegrationTechnology.com)

## fileXhub™ is part of the BIT B2B Integration Product Suite



### About Business Integration Technology, Inc.

Business Integration Technology Inc. (BIT) is a leader in B2B integration technology for transportation, logistics and supply chain management. BIT designs and implements highly cost-effective business-to-business connections that eliminate the costs of doing business with paper, phone and fax, bringing innovative value to shippers, carriers, 3PLs and companies looking to improve cycle time and reduce cost.

1310 Papin Street  
 First Floor Center  
 St. Louis, MO 63103

Phone: 314-635-6351  
 Fax: 314-601-3092  
<http://BusinessIntegrationTechnology.com/>  
 Email: [info@BusinessIntegrationTechnology.com](mailto:info@BusinessIntegrationTechnology.com)